

# EVELO



## Assembly of EVELO Atlas

The focus of this document is to assist with the assembly of your new EVELO Atlas. The scope is intentionally narrow – The User Guide that was included with your bike covers a much broader spectrum of topics: fit adjustments, battery care, controls etc.

Our Team is here to help 7 days a week  
[contact@evelo.com](mailto:contact@evelo.com) | 310-621-3100  
Feel free to reach out!

Watch the Assembly  
Instructions Video

# Unboxing Your EVELO

1

Begin unboxing the bike by cutting the banding then opening the box. Use caution regarding the staples as they can be very sharp. Remove the small boxes.



2

Laying the box on its side and sliding the bicycle out of the box is a great technique if you are unable to lift the bike.



3

Carefully remove all packing material from bike, avoid using sharp objects as to protect the paint.



4

Tools and User Guides will be in the small black EveLo box. The pedals will be in a small cardboard box.



3

Lower kickstand to keep bike upright during assembly.



# Install Fender and Headlight

1

Remove the screw in the Front Fork.



2

Remove Spacer.



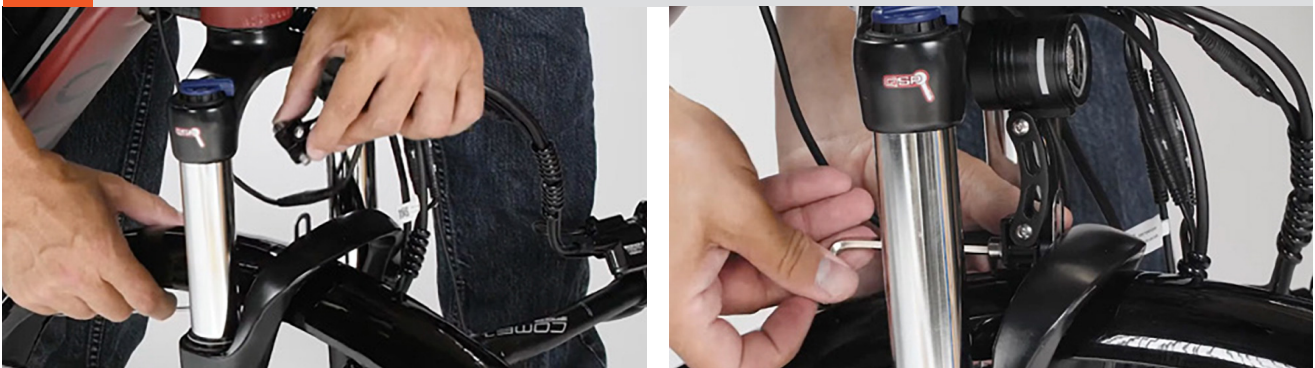
3

Thread Headlight and Spacer onto screw.



4

Attach Headlight and Fender assembly to fork.



# Install Front Wheel

1

Remove bolts from each side of fork and attach lower fender support struts.



2

Remove thru-axle from fork by flipping lever open and rotating counter clockwise. There is a nut on one side, a lever on the other.



3

Remove brake pad spacer from in between brake pads - it may be tight but simply pulls out. If this piece is not in place, skip this step.



# Install Front Wheel

4

Put Front Wheel into Place



5

Slide black axle into place, tightening the nut on the opposite side.



6

Close the lever, it should be tight enough to leave an imprint on your hand after closing.



7

Make sure the lever is pointing straight up towards the handlebars. Installing the axle incorrectly can result in the wheel coming loose while riding.



# Install Handlebars

1

Rotate Fork: rotate the steering assembly so that the cables aren't wrapped around the frame and the arch is facing forward. Both brake calipers should be on the left hand side of the bike. Loosen the stem clamp bolts, rotate the stem so it points forward and tighten the bolts.



1

Remove the 4 screws on top of the stem faceplate.



2

Place Handlebars in cradle and align with center.



3

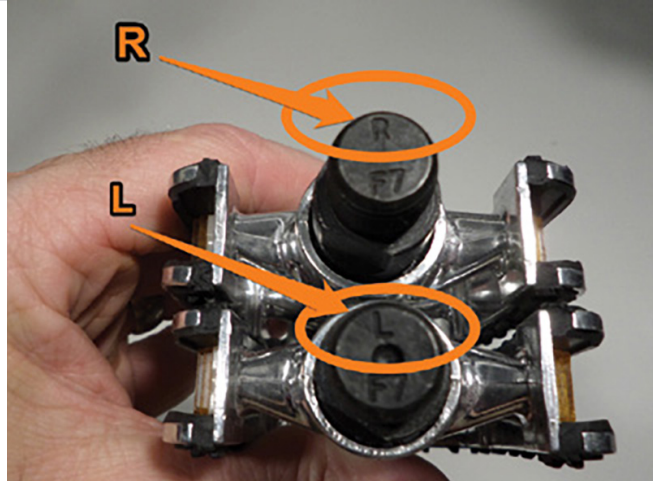
Replace cover and the 4 screws on top of handlebars.



# Install Pedals

1

Screw pedals into crank arms securely. Installation of the pedals requires a 15 mm wrench. There is an L and an R stamped into the end of each pedal for reference.



2

It is important to note that the pedals are threaded differently. The right pedal screws in clockwise and the left pedal screws in counter-clockwise.



# Use of Battery

**1** Two copies of the key come attached to the handlebars.



**2** Use the key to unlock the battery, the battery releases downward.



**3** The battery is heavy, please be careful. When reinstalling, push the battery into place firmly.



**5** Power up the bike and you're ready to ride!





# Serial Number Location

---

To register your bike on our website, you will need to record the serial number. It is located on the headtube of your bike, just above the front fork.





There is considerable additional information in your "**User Guide**".  
Of course, if you ever have questions, our team is ready to help!

Our Team is here to help 7 days a week!

**contact@evelo.com | 877-991-7272**

Feel Free to reach out!